

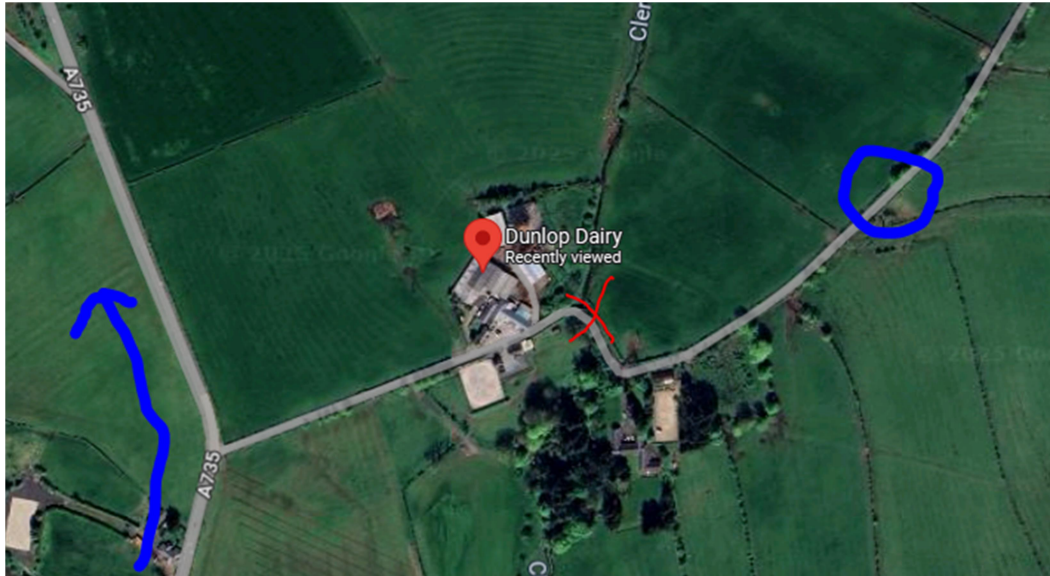
Burns Country Flyers

Site Directions

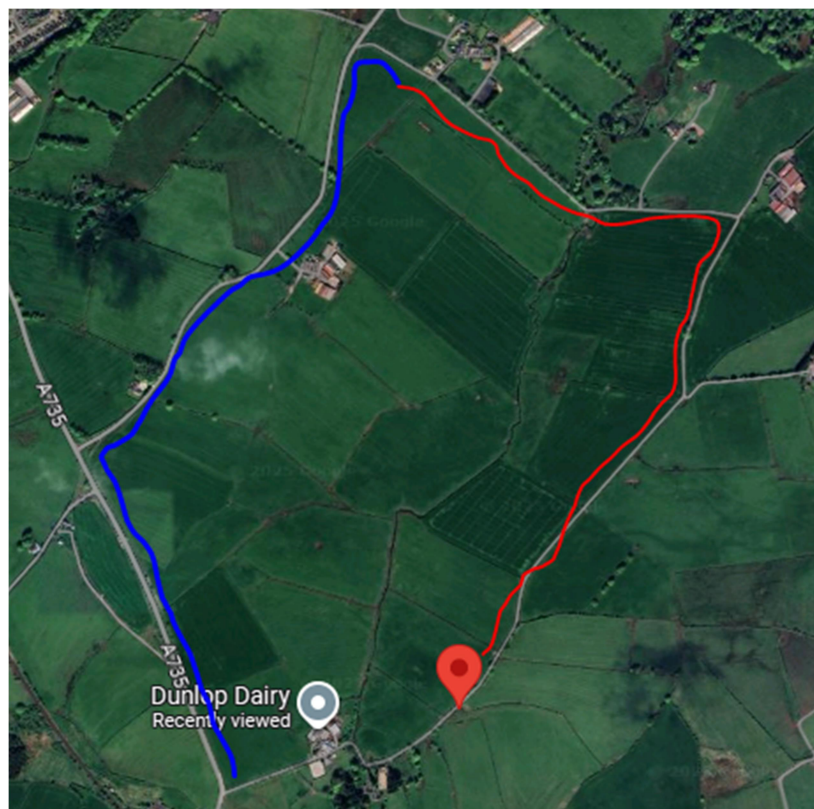
The location of the field entrance gate can be found following this link:

<https://maps.app.goo.gl/tFuAzTeHaWmV8deDA>

SatNav 55°41'50.4"N 4°30'56.2"W, What3Words ///lunge.pressing.airports



Getting to the entrance gate can be a bit tricky as the easiest route is permanently closed due to a weak bridge. In the picture above field entrance gate is in the blue circle, and the closed bridge is the red cross. If approaching from the south (Stewarton), your satnav will probably try and get you to turn right off the A735 toward the Dunlop Dairy. Do not take this turn, instead continue on a short way to the next right turn.



The route from here will steadily narrow. The Blue part is a single carriageway, but once you make the next right turn (shown below) it becomes narrow single track road that can be quite busy with farm traffic.

